

CABINET MEMBER FOR REGENERATION AND ENVIRONMENT

Venue: Town Hall,
Moorgate Street,
Rotherham. S60 2TH

Date: Monday, 24th January, 2011

Time: 10.30 a.m.

A G E N D A

1. To determine if the following matters are likely to be considered under the categories suggested, in accordance with Part 1 of Schedule 12A (as amended March 2006) to the Local Government Act 1972.
2. To determine any item which the Chairman is of the opinion should be considered later in the agenda as a matter of urgency.
3. Minutes of a meeting of the Chesterfield Canal Partnership Executive Steering Group held on 28th October, 2010 (Pages 1 - 5)
4. Conferences/Seminars (Pages 6 - 21)
 - to consider attendance at the UK Business Incubation 12th Annual Conference, 23rd – 24th March, 2011 – Manchester.
5. Request for the provision of a School Crossing patrol serving Kiveton Park Infant School (Pages 22 - 23)
Jane Muffett, Customer Service Manager, to report.
 - to consideration the provision of a school crossing patrol site serving Kiveton Park Infant School in accordance with the national recommended criteria.
6. Rotherham Local Site System (Pages 24 - 45)
Rachel Overfield, Countryside Planning Assistant, to report.
 - to seek approval of an update of the list of Local Wildlife sites and Regionally Important Geological Sites in Rotherham.

The Cabinet Member authorised consideration of the following extra, urgent item in order to expedite the matter referred to:-

7. A57 Worksop Road / Sheffield Road Improvement M1 Junction 31 to Todwick Crossroads. (report attached) (Pages 46 - 49)
Tom Finnegan-Smith, Transportation Unit Manager, to report.
 - to consider the current position relating to the A57 Worksop Road / Sheffield Road Major Scheme, and to seek to gain Cabinet Member's support to use LTP Integrated Transport capital funding and Maintenance allocations and to increase RMBC's local contribution and to confirm with the DfT the Council's continued support for the scheme.

Date of Next Meeting
Monday, 7th February, 2011

Members:

Councillor Smith, Cabinet Member for Regeneration and Environment
Councillor Walker, Senior Adviser
(Councillor Pickering, Chair, Planning Board;
Councillor Dodson, Vice-Chair, Planning Board
Councillor Whysall, Chair, Regeneration Scrutiny Panel
Councillor Swift, Vice-Chair, Regeneration Scrutiny Panel)

DRAFT (for comment at TOG 6th January 2011)

Minutes of the meeting of the **CHESTERFIELD CANAL PARTNERSHIP EXECUTIVE STEERING GROUP** held at Retford Enterprise Centre, Nottinghamshire, on Thursday 28th October 2010.

Attending

Cllr Kathleen Sutton	Bassetlaw District Council
Sandra Withington	Bassetlaw District Council
Cllr Pat Proctor	Chesterfield Borough Council
Mark Shewring	Chesterfield Borough Council
Cllr Andrew Jackson	Derbyshire County Council
Martin Dowson	Derbyshire County Council
Peter Storey	Derbyshire County Council
Helen Fairfax	North East Derbyshire District Council
Cllr Liz Yates (Chair)	Nottinghamshire County Council
Andy Wickham	Nottinghamshire County Council
John Nuttall	British Waterways (East Midlands)
Tony Harvey	British Waterways (Regeneration)
Lucie Hoelmer	British Waterways (Regeneration)
Geraint Coles	Chesterfield Canal Partnership
Robin Stonebridge	Chesterfield Canal Trust
Ed Green	Derbyshire Wildlife Trust
John Baylis	Inland Waterways Association

1. Apologies

Cllr Harold Laws	North East Derbyshire District Council
Cllr Jenny Whysall	Rotherham Metropolitan Borough Council
David Trickett	Chesterfield Canal Trust

Subject, Discussion, Comment**2. Minutes of Last Meeting****3. Matters Arising**

Page One: Vice Chair CCP: It was proposed that Cllr Harold Laws NEDDC be the next Vice Chair of the Chesterfield Canal Partnership.

AW noted that it was likely that he would be made redundant in the near future due to changes at NCC and that this could affect his ability to chair the TOG. All shared concern over this development but it was requested he remained Chair of TOG until his, and others, positions became clear.

Page Two: JB reported that he had spoken to SJ over the slipway design at Staveley Town Basin. GC confirmed design changed to

Actions

Accepted as a true record

GC to formally invite Cllr Laws to be next Vice Chair.

incorporate new standards.

Page Two: Item 6. GC reported that he had received feedback on Next Navigation from all local authorities with the exception of RMBC. Assurances had been received from RMBC that the matter was now in hand and that he could expect a response shortly.

GC to pursue.

Page Three: Item 8. Done – see below Item 5.

Page Three: Item 13 – Evaluation for Development Manager Post. No formal response as yet from DCC – issue looks likely to be overtaken by proposed changes to Partnership.

Cllr Yates and Cllr Jackson to discuss.

4. Funding and Future of the Partnership (Robin Stonebridge, Chair, CCT) (presentation)

RS examined options for the future of the Partnership. Suggested that the best route would be the formation of an independent Company to delivery the restoration objects of the CCP. General agreement with the conclusions of the presentation.

5. Proposed Governance Structure for the Delivery of Major Projects (Geraint Coles, CCP) (presentation & paper attached)

GC outlined the proposed structure consisting of a stakeholder group, a delivery company with charitable objects and a series of community enterprises.

The officer made four recommendations. On reflection by the ESG these were slightly modified to read:

- a. That the Chesterfield Canal Partnership continues to function as an inclusive cross border advisory unincorporated partnership.
- b. That the Chesterfield Canal Partnership seeks to establish an incorporated body for the purposes of delivering major projects.
- c. That the Chesterfield Canal Trust be supported in the foundation and establishment of the Lockside Community Interest Company with the express purpose of developing income streams to support the long term maintenance of the waterway.
- d. That the Development Manager should now undertake detailed consultation with all partners and produce a detailed structure for consideration at the February meeting of the Executive Steering Group.

GC to prepare a memorandum and articles of incorporation
GC to assist CCT in legal registration of Lockside CIC.

GC to undertake consultation and produce proposals.

Acceptance of the modified recommendations was proposed by John Baylis and seconded by Peter Storey. Agreed unanimously.

Several issues were raised by EG & TH concerning liquidity, asset base and liabilities and set up and transfer issues. LH & TH noted need for mechanism for cash flow.

GC to note.

An offer of assistance with preparation of documentation by Tony Harvey was gratefully accepted by GC.

GC to note.

6. Planning for Heritage Lottery Bid (GC)

GC gave a presentation in which he outlined the shape of the proposed HLF bid. Copies of the first draft of the bid were distributed. GC drew attention to the fact that HLF had yet to respond to the initial bid and that the shape and areas covered by the bid may yet change.

GC noted that the costs for stage one (development) are based on existing planned contributions for next year (and thus are cost neutral to Partners) and that the costs for stage two (delivery) are all subject to revision.

The main issue to face partners will be the long term maintenance of the waterway asset, although it was noted that the scheme was built around creating opportunities for income generation in an effort to reduce net public liability.

It was agreed that the bid was approved in principle and subject to revisions required by Partners.

GC to prepare second draft.

7. Development Updates

Chesterfield Waterside (GC) Final reserved matters issues being worked through. New promotion pack with revised site plan being printed and will be distributed to partners ASAP.

GC to distribute Waterside info when available.

Hollingwood Lock House (GC) Original lock house has been stripped back and repairs on the walls are underway. Foundations and steel frame for extension building is nearing completion. All within schedule.

GC to monitor progress

Grant of £20,000 towards the café extension sought by GC through CCT from Viridor via DET in September. Granted in October.

CCT to claim award and ensure payment to DCC.

Staveley Town Basin & Markham Vale (PS/GC) Town Basin contract out to tender and work should start on site in January.

PS to let contract.

Link from Town Basin back to Mill Green under construction by Canal Trust is making great progress. Need to agree line of next section to continue CCT work-party momentum.

PS, SJ & GC to agree line of wash wall for next stage.

Additional funding required to complete Link section being sought through bid to Coalfields Regeneration Trust.

GC, RS & MB to pursue bid.

Bid for lock foundation funding made to Lafarge (GC via Canal Trust) with match funding secured from Inland Waterways Association Restoration Committee.

GC to follow up and report.

Doe Lea Valley (GC/PS) Site investigation concluded. Report with structural engineers to design foundations for aqueduct.

Renishaw (PS) Yorkshire Water have agreed design to move water main. Works due to commence in near future once payment issues resolved.

PS to monitor progress

Killamarsh / Kiveton (GC) Meeting with BW very productive. Provisional agreement for MOU regarding possible further restoration. Further meetings planned.

Worksop / Retford / West Stockwith (JN) Works on towpath between Shireoaks and Worksop successfully completed by BW ahead of schedule and below budget. Small opening event planned for 26 November 2010 at 10am at Deep Lock (Lock Keeper pub), Worksop.

Trent Vale Landscape Partnership (AW) Now nearing end of 1st year and good progress made in spite of repeated problems with Beckingham Willow Works. AW noted the degree of experience of dealing with HLF now present in NCC & local BW and suggested this will be of value in bid preparation.

GC to meet TH & LH to discuss best way forward.

JN to make further bid to ERDF

JN & GC to organise event.

GC to note and access expertise.

8. Progress Report by the Chesterfield Canal Trust (RS)

Membership now at 1100 with marked increase in younger people and volunteers. CCT Web site and twitter etc. being used to reach new generation. The "E-Newsletter" is now on its 9th edition and the audience is growing quickly.

Trust members are working with the Pomegranate Theatre Company on a play about the origins and history of the canal.

Work party has grown and now has a midweek work session as well as the weekends.

James Brindley (display trailer) has been to around 50 venues this year and been visited by 4000 plus people and seen by many more. Before Christmas the trailer will be doing all the "canal capitals".

Talk at the Winding Wheel in Chesterfield on "The Canals of China and Chesterfield" was very well attended with over 200 people in the audience.

Canal Visitor Guide – 13,000 copies of the 2010 edition were printed all bar a few dozen have now gone. The 2011 edition with improved graphic design is now in the press.

Staveley Town Lock Fund Appeal (buy a brick / hod / barrow of bricks) is going well with over £5000 raised to date.

Several bids for external funding in the pipeline.

Successfully gained £20,000 Viridor funding to fill gap in funding at Hollingwood. Steel frame for Lock House extension has gone up. The Trust is becoming excited at the prospect actually moving in.

Python delivered the panels supplied by BW for the Works compound for the construction of "New Dawn" (the replica Cuckoo Boat) at Shireoaks Marina. Compound is up and delivery of a steel container for tools and stores is due in the next few weeks. Trust acknowledges the wonderful support of the residents of the basin and BW staff in making this possible.

Very good crop of press articles – every national waterway publication now carries at least a short note about the canal every month. Local Newspapers carry articles every few weeks. The canals profile has never been higher. For example the generous gift of £600 by a local couple as a Golden wedding present was carried by Radio Sheffield, local, regional and national newspapers – wonderful publicity from a generous gift.

9. Any Other Business The Chair, Cllr Yates, noted that David Trickett of the Chesterfield Canal Trust was seriously ill and asked that the best wishes of the Partnership be passed to him.

RS to Convey.

10. Dates & Venues of Next Meetings The dates were reviewed and it was decided to change the date of the first meeting in 2011 from 20th January to 10th February.
All meetings will commence at 10 am and should conclude by 12.30 pm with the exception of the field visit meeting. The dates and venues for the next meetings are:

All - Please note change of date of next meeting.

Thursday 10th January 2011 @ Chesterfield Town Hall, Rose Hill, Chesterfield as guests of Chesterfield Borough Council.

All - Please note.

Thursday 14th April 2011 @ The Idle Valley Centre, near Retford as guests of Nottinghamshire County Council

All - Please note.

Thursday 9th June 2011 @ Hollingwood Lock House Hub, near Staveley as guests of the Chesterfield Canal Trust.
Followed by lunch and a field visit to Staveley Town Basin.

All - Please note all day meeting (inspection visit to worksite)



BI 12: UKBI's 12th International Conference 23rd - 24th March 2011

Marks&Clerk m&c
Patent and Trade Mark Attorneys



Helping you succeed...

Effective intellectual property strategies

Your intellectual property is a critical asset to your business. So it's vital you work with people who have the right experience and expertise to protect your IP – and help you fully exploit its potential.

We take time to understand your business – whatever the size, sector and location – and tailor our services to create the most effective intellectual property strategy for you. We're here to ensure you get the maximum value and benefit from your IP.

Our services cover all aspects of intellectual property including patents, trade marks, designs and copyright – from securing protection to enforcement, transactions and due diligence.

We have an unrivalled network of 11 offices across the UK with a long-established office in Manchester. Internationally, we have offices in Europe, Asia and North America. This coupled with our partnership with Marks & Clerk Solicitors means we can offer you single point access to a uniquely integrated IP service both locally and globally.

For more information contact:
Mark Kenrick
Partner
T 0161 233 5800
E mkenrick@marks-clerk.com



BI 12: UKBI's 12th International Conference will take place from 23rd – 24th March 2011 in Manchester.

Supported by Marks and Clerk, University of Manchester Incubator Company (UMIC), Harrison Goddard Foote and Marketing Manchester this year's conference promises to be the biggest and most successful to date.

The event will take place over two days and will offer you plenty of opportunities to learn and network with colleagues from across the globe. We offer you the chance to build your own conference experience by choosing from the various elements available.

Who Will Attend?

- Business Incubation Practitioners.
- Private Sector Stakeholders.
- Regional Development Agencies.
- Technology Transfer Specialists.
- Large Corporate Organisations.
- Local and National Government.
- Business Support Agencies.
- Charitable Support Organisations.
- Property Developers.
- The Finance Community.
- Local Enterprise Partnerships.
- Enterprise Agencies.
- Policy Makers.
- Science Parks.
- Universities.
- Lawyers.
- Business Advisors.

Why Should I Attend?

"I have been to 3 UKBI conferences and each has been a new learning experience – new contacts, new suppliers and, most importantly, new perspectives and practices on our ever-changing business. We have to learn and adapt in this game and UKBI's conference is the starting point for me."

■ **Nick Sturge** - Centre Director - SETSquared Bristol.

"As a U.S. business man with interests in reciprocal promotion of SMEs, attending the UKBI Conference was a "must do." The best place for me to learn about the best practices for SME development and promotion in the UK and Europe was at the UKBI Conference. The network connections alone were worth the time and expense and the conference was great value for the money. The UKBI staff really know how to put on a world class conference!"

■ **David Denny** - David. W Denny LLC, USA.

"Attending the UKBI annual conference gives me a great opportunity to meet and network with people from around the globe, all in one place. In discussion with anyone, you see an openness amongst members to share knowledge and information, helping the cause, which allows me to make sure as a business, we can focus on that and develop our product to assist even more. It's also a great time to catch up with my existing clients in a relaxed networking environment and meet new ones."

■ **Noel Kennedy** - Business Development Manager - RA Information Systems.

"The UKBI conference is a great opportunity to make sure I stay up to date with the latest innovations in the incubation sector whilst providing me with time and the opportunity to challenge the way we do things at Sparkhouse. The opportunity to network with a diverse group of national and international contacts has always helped to support the development of our incubation centre."

■ **Vicky Addison** - Incubation and Centre Manager - Sparkhouse.

"I always make a point of attending the UKBI conferences. Well organised, with a fantastic line up of speakers, UKBI provides an ideal platform for networking and for all my continuing professional development needs."

■ **Gordon Gough** - Chief Executive - Enterprise Northern Ireland.

"Attending the UKBI Conference is the best opportunity to meet and talk to business incubation professionals in order for me to keep up to date with current trends and share issues. I have never left a UKBI Conference without expanding my professional horizons."

■ **Dawson Evans** - Project Manager - Technium, Wales.

"UKBI's Conference was a great opportunity to expand on my Australian experience with my peers, great professional development and an opportunity to gain international experience on business incubation strategies and management."

■ **Stephen Frost** - Managing Director - Nirimba Business Centre, Australia.



A Word from UKBI's Chief Executive Peter Harman

These are challenging times for business incubation in the UK. As I write this, the outputs from the Comprehensive Spending Review are beginning to be implemented and have been made public. I recently spoke with a key national agency and they were of the view that even by Christmas much of the 'dust will not have settled'.

As many of you will know, we took the decision to move our major annual gathering from November to March. As it turns out, this will mean that many of the issues and policies that are currently being debated (not to mention the CSR, the demise of 192 'quangos', Local Enterprise Partnerships, BIS Committees on Science and Technology, and the Regional Growth Fund) should be much clearer by then and this will give us all the ideal opportunity to think collectively and carefully about the way forward for our industry for the benefit of your clients.

For a number of years now, you have asked us to provide more opportunities for interactive and flexible 'roundtable' discussions at our international conference and this year, at B12, we will have more of this type of session available to you.

As always, we recognise that our industry is very diverse and that makes it challenging to address everyone's needs. However, this year's programme will clearly focus on the two distinct groups that make up the core of the business incubation industry, namely 'High Growth, High Technology' and 'Regeneration'. Both of these groups are essential in delivering and underpinning the government's plans to 're-balance' the economy, whether in the direction of 'High Growth Hubs or Local Enterprise Partnerships' or in terms of the challenges that will arise from the consequences of the large scale redundancies that are already being announced. The business incubation industry stands ready to help and add value in these areas and UKBI have made this point repeatedly to government and others across the UK.

In addition to the main conference programme that is set out in this brochure, we will hold our annual International Gala Awards Dinner on 23rd March at which a number of awards will be presented. I urge you to nominate individuals and organisations that fall into the various categories. There will also be a workshop on Why you Need a Governing Body as well as an introduction to UKBI's Inspire accreditation process that will be essential in helping government to identify the quality and best practice across our industry.

As I mentioned above, this will be the ideal opportunity for us all to meet and actively engage with each other to deliver our objectives and those of government and our other stakeholders.

Finally I would like to thank Marks and Clerk, Harrison Goddard Foote, UMIC and Marketing Manchester for their help, support and sponsorship in making B12 happen.

Peter Harman - Chief Executive
p.harman@ukbi.co.uk



Membership of UKBI - providing the keys to your success

- **UKBI members are directly supporting more than 20,000 start-ups and SMEs in the UK alone.**
- **We're not just for the UK, we have members across the globe – including the US, India, Cyprus, Belgium, Vietnam, Australia, Republic of Ireland and Czech Republic amongst many more.**
- **Did you know that members engage in professional development and training, resulting in improvements in their performance and ultimately of their business incubation environments?**



UKBI's Members are supporting more than 20,000 innovative SMEs and entrepreneurs in the UK alone, their impact on the economy and communities they operate in is immense. With survival rates of client companies being between 85 and 95% after 3 years, UKBI member incubators are supporting and growing the next generation of world class entrepreneurs. Our members are fundamental in securing the future of business incubation, innovation and entrepreneurship.

Membership of UK Business Incubation not only offers dedicated and tailored support and advice to practitioners and stakeholders, it also opens up access to the world's leading experts from the global community.

With services ranging from training, networking, best practice information and reviews to tailored, bespoke research and specialist business products, membership of UKBI provides unrivalled access to the information and support that you want.

Who can join?

Membership of UKBI is open to all those involved in ensuring the sustainability and development of business incubation across all sectors and regions.

Would you like to....

- ✓ Get the news that effects you delivered to your inbox each month
- ✓ Tell the world your news
- ✓ Receive discounts on UKBI training events
- ✓ Download many of UKBI's publications free of charge
- ✓ Be promoted through UKBI's PR and lobbying activities
- ✓ Attend free member's networking events
- ✓ Be included in groundbreaking research
- ✓ Have the national and international membership association at the end of the phone or email to support you
- ✓ Access exclusive online membership services
- ✓ Partner on projects and consultancy

UKBI's members are as diverse as the entrepreneurs and businesses they support

With over a 1,000 individuals within our network, UKBI's membership is a rich mix of organisations and individuals at the cutting edge of entrepreneurship and innovation. Our members represent all sections of the business community and all sectors.

Membership of UK Business Incubation not only offers dedicated and tailored support and advice to practitioners and stakeholders as well as opening up access to the world's leading experts from the global community.

But, the real value of membership is the networking and knowledge share between members and staff. Our members are some of the most experienced in the global community and have knowledge of all sectors. Through facilitating effective networking between members, UKBI provides the ideal environment for business incubation professionals to flourish.

For further information call **+44 (0)121 250 3538** or email **k.broadbent@ukbi.co.uk**



The Programme

Wednesday 23rd March 2011

Time	Event
10.00 – 16.00	<p>UKBI Workshop – Why you need a Governing Body – the Role and Added Value of Boards and Advisory Groups</p> <p>Business Incubation best practice recommends that your environment has some form of governing body in order to support you, the Business Incubator Manager as well as help you run the business. Many environments fail to put any kind of governing body/advisory group in place because they do not understand the added value that they bring.</p> <p>This workshop will explore why you need a governing body/advisory group, the role that they play and the added value that the group would bring to your environment and more importantly your clients!</p> <p>Location: Hilton Deansgate</p>
10.00 – 16.00	<p>Incubator Tours</p> <p>This year's tour will showcase two of the North West's finest examples of business incubation in practice. The incubator tour will depart from the Hilton Deansgate and will take delegates to:</p> <ul style="list-style-type: none"> ■ The Stockport Business Incubator ■ Media Factory
10.00 – 16.00	<p>The Winning Business Academy</p> <p>The Winning Business Academy is a collaborative venture between The University of Manchester Incubator Company (UMIC) and Winning Pitch PLC. Established in 2006, the Academy provides a range of training, consultancy and mentoring services to enable companies – in particular start up and very young businesses with growth potential - to achieve rapid, sustainable and profitable growth.</p> <p>The Academy's goal is to accelerate the development of business providing practical support to enable them to excel in the critical area of business development. Winning Pitch have developed a suite of products to help such early stage companies enhance their business development capabilities.</p> <p>UKBI are offering their members the opportunity to attend this full day workshop for £25 + VAT.</p> <p>Location: Core Technology Facility, UMIC</p>
11.00 – 15.00	<p>UKBI Workshop – Understanding the Inspire Process</p> <p>The Inspire monitoring, development and accreditation process for business incubation[®] is a simple, 5 step process, which takes into account the stage of development of the environment and the community it serves: established business incubation environments who can demonstrate best practice can apply for the full Inspire Accreditation Process or those who are still developing their processes and procedures can apply for the Commitment to Inspire Accreditation, to support their development of best practice.</p> <p>Step 1 of the process is the Understanding the Inspire Process Workshop. This is your opportunity to learn about the benefits for you and your stakeholders, as well as the structure and requirements of the Inspire process. This workshop will explain the benefits of the Inspire process for your environment, your stakeholders and importantly, your clients. It will also provide you with details of how to complete the process, what information will be needed and how to present it.</p> <p>Location: Hilton Deansgate</p>
19.00 – 23.00	<p>International Gala Awards Dinner</p> <p>Location: Hilton Deansgate</p>

The Programme

Thursday 24th March 2011 – Main Conference Sessions

Time	Event
09.00 – 09.30	Registration
09.30 – 10.15	Opening Session
10.15 – 10.45	Networking Break
10.45 – 12.15	1A The Role of Business Incubation in Re-balancing and the Regenerating the Economy. <ul style="list-style-type: none"> ■ Life after the Comprehensive Spending Review ■ How Government Strategies will Affect Business Incubation ■ Integrating your Environment with the Broader Local Economy
	1B Sourcing Finance for your Clients. <ul style="list-style-type: none"> ■ Understanding New Sources of Finance ■ The Advantages of Working with Business Angels ■ Why you need Access to a Seed Fund!
	1C Roundtable: Understanding and Utilising the Concept of Open Innovation
	1D Roundtable: Creating Dealflow in the Clean Tech Sector
12.15 – 13.45	Lunch
13.45 – 15.15	2A Commercialising and Protecting Your Client's IP <ul style="list-style-type: none"> ■ Why IP Adds Value to a Company ■ The Process of Protecting your Client's IP ■ What Happens if you don't Commercialise your Client's IP
	2B What makes a Business Incubation Programme Successful <ul style="list-style-type: none"> ■ Where do you Find the Right People ■ Why you Should Adopt Best Practice ■ Is your Building Fit for Purpose?
	2C Roundtable: What's New in Bio Technology?
	2D Roundtable: Maximising Your Board
15.15 – 15.45	Networking Break
15.45 – 17.15	3A What do your clients need most? <ul style="list-style-type: none"> ■ Helping Companies to Generate sales ■ How to get your Clients out of their Office ■ Striking a Balance. Ensuring your Mix of Services Meet your Client's Needs.
	3B Business Incubators as High Growth Hubs <ul style="list-style-type: none"> ■ Why you should Collaborate with other Business Incubators ■ Helping your Clients to Achieve High Growth ■ Finding Partners who can Help – Utilising High Growth Programmes
	3C Roundtable: Using Social Networks to Promote your Environment
	3D Roundtable: Capitalising on your Experience. Is Consultancy an Option?

Incubator Tours

This year's tour will showcase two of the North West's finest examples of business incubation in practice. Our incubator tour will take delegates to two of the North West's innovative and supportive environments, all helping to start and grow business.

Media Factory



UCLan's Business Incubator is located on the 4th floor of the £15 million Media Factory building on UCLan's Preston University campus. The state of the art facility boasts 11 business units, hot desk facilities and a comprehensive programme of business support. Part funded by the European Regional Development Fund the project will assist over 300 of the regions small to medium enterprises (SME's) and create over 100 new businesses in the next 18 months.

Some 63 businesses are currently using the facilities and tapping into the support offered through the 'Northern Lights' programme, including mentoring, advice clinics and workshops. For more information contact the team on **01772 895500**, email northernlights@uclan.ac.uk or visit www.uclan.ac.uk/northernlights

The Stockport Business Incubator



The Houldsworth area once played a vital part in Stockport and Manchester and was home to a number of cotton spinning mills. That original industry has now gone but the architectural legacy remains to provide a strong vision to rebuild a thriving area for modern time's whilst preserving the historic legacy. A number of the mills have been turned into other economic and residential uses and the area is fast gaining the reputation as a key employment site for new and fast growing businesses in knowledge and creative sectors.

The Stockport Business Incubator CIC plays an important part in the development of the Houldsworth Village vision via its outreach and commercial activities. It provides an environment where Stockport and Manchester businesses find it easier to develop and progress ideas and innovation to company status; the proximity of the incubator units enables them to develop co-operation with other like-minded businesses and promote collaborative projects to develop the Houldsworth Village vision.

Stockport Business Incubator Company has invested £800,000 into this scheme. New enterprises within the University are given help with business planning, finding finance and research and development through links with the University of Manchester. The aim of the incubation centre is to foster knowledge-based companies, which will provide skilled, well-paid jobs for the local area. www.houldsworth-village.co.uk



Advertising and Exhibition Opportunities

During this prestigious conference we have a wide range of advertising and exhibition opportunities to offer. Advertising/exhibiting at UKBI's 12th Annual International Conference will give you direct access to hundreds of incubators and their client companies. With over 200 delegates in attendance at the event, exhibitors and advertisers will gain access to the network of incubator managers and some of the most influential players in the SME market.

The various options that are available are detailed below along with their related fees.



Exhibition Space

Member **£450*** Non Member **£750***

The exhibition will take place on Thursday 24th March 2011 at the Hilton Deansgate during the main day of the conference. The exhibition is located in the conference networking area. This will be used for all of the networking and catering throughout the event.

All spaces will be 2m x 3m. The stands will be erected around the outside of the room. If exhibitors require one, a standard table can be supplied. Exhibitors will be responsible for covering the cost of display boards should they require them. In addition, exhibitors will be responsible for the set up and break down of their stand on the day of the event.

Exhibiting at the event includes 2 exhibitor passes for the networking area only. Should the exhibitor wish to join the Conference sessions a place will need to be booked, a 20% discount off ticket prices will be applied.

Internet access and power will be provided if available but there may be a charge from the venue which will be passed on to the exhibitor.

Literature Table

Member **£125*** Non Member **£225***

Literature tables will be located in the exhibition area. This area will be used for all of the networking and catering throughout the event on Thursday 24th March 2011.

A maximum of 300 copies of your organisation's literature may be placed on the table.

Advertising In The Conference Brochure

Full Colour Page

Member **£500*** Non Member **£750***

Half Colour Page

Member **£300*** Non Member **£450***

The conference brochure will be A4 and will be printed in full colour. The brochure will be included in the Conference delegate bags which will be handed out to over 200 delegates during registration on Thursday 24th March 2011. In addition we expect to distribute packs after the event to those unable to attend. The brochure will include valuable information on different aspects of Business Incubation, Innovation and Entrepreneurship, relevant contacts and other important source material. Organisations are invited to take out a half or full-page advert.

The deadline for confirming advertising space in the conference brochure is Friday 28th January 2011.

Advertising In The Conference Delegate Pack

Member **£250*** Non Member **£400***

We are inviting organisations to insert a flyer into the Conference delegate bags which will be handed out to over 200 delegates during registration on Thursday 24th March 2011. In addition we expect to distribute packs after the event to those unable to attend.

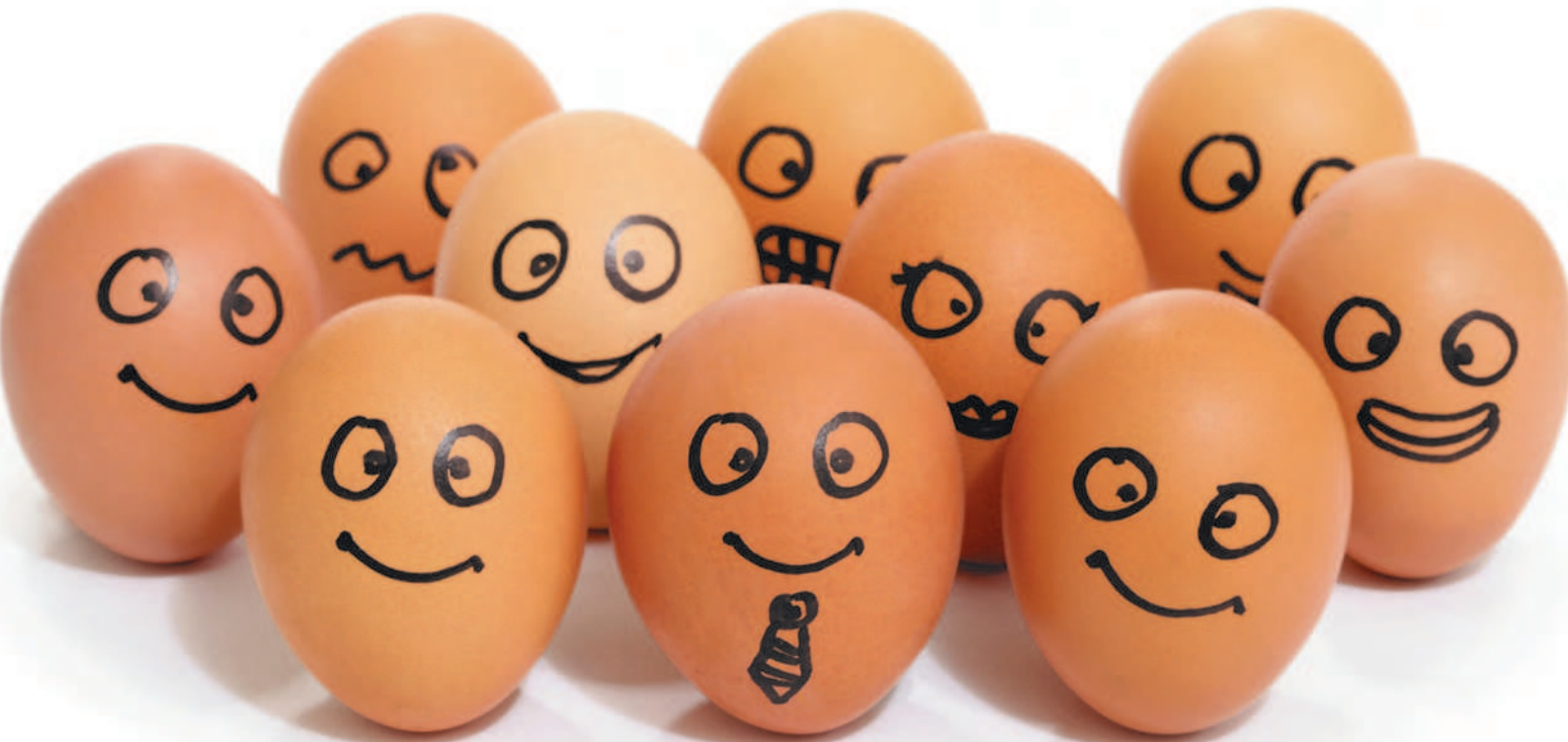
The deadline for confirming advertising in the conference delegate bag is Friday 25th February 2011.

* Prices are exclusive of VAT

ibcs

the software **solution** for Incubation
and Innovation Centres

**From as little as only £150 per month...
Because we're really good eggs!**



**Just how you nurture and support the growth of SME's,
ibcs supports the management of your centre.**

ibcs, our business incubation software has been designed to guide you through your day-to-day business activities, allowing you to provide a first class service to your clients.

Developed in-house and modular in design, **ibcs** will support your daily and monthly centre routines. Whether your needs are standard or complex, **ibcs** is the flexible and affordable software application that can be tailored to fit.

ibcs provides one integrated software system giving you total control over your:

- Sales Pipeline, Marketing & CRM**
- Work Space Management**
- Meetings, Conferencing & Events**
- Invoicing & Credit Control**
- Facilities Management & Visitor Security**
- Surveys, Data & Incubation Statistics**
- & Much Much More**

The logo for ra Information Systems, consisting of the lowercase letters 'ra' in a bold, green, sans-serif font. The letters are slightly shadowed, giving them a 3D appearance as if they are floating above a reflective surface.

Contact Us Today
ra Information Systems | 0845 365 10 71
info@ibcs-software.com | www.ibcs-software.com



Travel and Accommodation

Hilton Manchester Deansgate Hotel

303 Deansgate, Manchester, M3 4LQ

+44 (0) 161 870 1600

[www.hilton.co.uk/
manchesterdeansgate](http://www.hilton.co.uk/manchesterdeansgate)



The main conference sessions will be held at the 4 star Hilton Manchester Deansgate Hotel in the centre of Manchester. The hotel is a 10 minute drive from Piccadilly and Victoria train stations and a 25 minute drive from Manchester International Airport.

We have negotiated a special conference rate for our delegates.

Bed and Breakfast £125

This rate represents a saving of over 30% compared to the hotel's standard rates. They are valid up until 28 days before the conference when normal hotel rates will apply. To book call the hotel on 0870 590 90 90 quoting reference GUKBI and ask for the best available room rate.

The following hotels are in easy walking distance of the main conference venue and have a special UKBI conference rate. To reserve rooms at these special rates, please visit <https://www.conferencebookings.co.uk/delegate/MNCUKBI2011>

Radisson Edwardian Manchester

Peter Street,
Manchester M2 5GP
+44 (0)161 835 9929
www.radissonedwardian.com
★★★★★

Arora Hotel Manchester

18-24 Princess Street,
Manchester M1 4LY
+44 (0)161 236 8999
www.manchester.arorahotels.com
★★★★★

The Midland

Peter Street,
Manchester M60 2DS
+44 (0)161 236 3333
www.qhotels.co.uk
★★★★★

Jurys Inn Manchester

Great Bridgewater St,
Manchester M1 5LE
+44 (0)161 953 8888
www.manchesterhotels.jurysinns.com
★★★★★

The Castlefield Hotel

Liverpool Road,
Manchester M3 4JR
+44 (0)161 832 7073
www.castlefield-hotel.co.uk
★★★★★

Premier Inn - Bishopsgate

7-11 Lower Mosley Street,
Manchester M2 3DW
0871 527 8742
[www.premierinn.com/
en/hotel/MANPMI/
manchester-central](http://www.premierinn.com/en/hotel/MANPMI/manchester-central)

Global reach
and in-depth
knowledge
of IP for all
industries

Intellectual Property:
Release its potential

For further information please contact:
Cristina Rivas Graver on +44(0) 113 233 0100
or email crgraver@hgf.com

HGF
Harrison Goddard Foote
Patent and Trade Mark
Attorneys
hgf.com



Inspire

The Inspire Monitoring, Development and Accreditation Process for business incubation was launched little over a year ago, here are some of the Centre's that have been accredited and benefited from going through the process.



The award winning **Hillington Park Innovation Centre** offers a premier incubation facility for the next generation of innovative, high growth potential, early stage technology companies in Scotland. The Centre is much more than a managed property. Their aim is to make a significant difference to ambitious, innovative technology businesses, through a structured and proven process of innovation advisory support and business incubation.

Anna-Marie Taylor, *Marketing Manager, Hillington Park Innovation Centre* said: "The Inspire Accreditation enforces Hillington Park Innovation Centres position in the market as one of the leading innovation centres in Scotland and we are delighted to have been awarded the highest recognition of 'leading edge status'. This supports our ethos of providing top-class advisory services to some of Scotland's leading entrepreneurs in a state-of-the art modern facility and the accreditation recognises the quality of service we provide. "

Alba Innovation Centre is committed to supporting the development and accelerated growth of the next generation of innovative, knowledge based, high growth technology businesses in the East of Scotland. The Centre provides an enabling environment within which businesses receive in-house intensive growth support, the opportunity for creative development and networking with other businesses and access to our network of successful entrepreneurs and specialist expert knowledge.

The Centre is a modern, attractive environment offering many facilities including meeting rooms, seminar suites, fully serviced reception and IT facilities, giving you the ability to get on with growing your business and leaving us to look after the rest.

Stephen Morris, *Senior Innovation Manager, Alba Innovation Centre* said: "We were delighted to be awarded the Inspire Accreditation for Alba Innovation Centre after only 3 years in operation. The accreditation highlights the hard work and effort the team has put into the Centre to ensure we provide excellent facilities and advisory support to companies in an enabling environment where they can focus on developing their ideas and growing their business."



Technium Springboard has been operational since 2006 and targets high growth businesses within the science and technology sectors. Originally established as an independent innovation Centre, Springboard joined the Pan-Wales Technium Network in December 2008.

Geraint John, *Manager of Springboard* said: "We found the Inspire Accreditation process a very worthwhile exercise, it gave us the unique opportunity to measure what we had achieved so far against best practice. From a personal point of view it made me think long and hard about how I managed the Centre and how we could improve the services we offer. The final report was very comprehensive and provided us with constructive and practical guidance on how we could take our processes forward. As a result we have already implemented a number of changes to help enhance our product offering."



Managed by TEDCO on behalf of Northumberland County Council the **Berwick Workspace**, opened in 2008, was accredited as a best practice business incubator in May 2010.



Doug Scott, Chief Executive of TEDCO, The Berwick WorkSpaces management company said:

"The Berwick WorkSpace model is based on the successful Quadrus model implemented in the context of a market town. The Inspire accreditation together with the 2009 award for the best new business incubator gives TEDCO and its stakeholders great confidence that we are doing the right things well as the Centre matures."



Doug Scott, Chief Executive of TEDCO said: "I am delighted that **The Quadrus Centre** has secured UKBI Inspire accreditation.

We have worked hard to establish Quadrus as a true business incubator in South Tyneside, an area in transition from old traditional industries.

In the face of initial scepticism about business incubation, the team has worked with businesses that have achieved real growth then moved to larger premises within South Tyneside. The Inspire model provides clear evidence to our stakeholders that we



are committed to the incubation model and the UKBI accreditation process demonstrates our ability to deliver to those commitments."



Martino Picardo, Centre Manager for the Manchester Bioscience Incubator and Managing Director, **UMIC Ltd** said: "Going through the Inspire process was a huge benefit to our staff and to ensuring that our procedures were working as well as we thought; getting the feedback from our tenants as a part of the process, has proven extremely

helpful and indicated clearly where we need to continue improving. The accreditation process as a whole has been extremely helpful in promoting UMIC as "a centre of best practice" and indicated to our tenants that we are doing the best job that we can to ensure that their needs are met."



Sparkhouse has been in operation since 2003 and is managed by Enterprise@Lincoln, the University of Lincoln's department for business support and enterprise activities. Sparkhouse is operated as a not for profit organisation and applicants for business incubation are start ups and early stage businesses from innovative technology sectors.



Vicky Addison, Incubation and Centre Manager at Sparkhouse said: "Going through the Inspire process has been of huge benefit to Sparkhouse at the University of Lincoln. It provided a focus for all the incubation team to examine together how we support our clients and operate the centre. The final report has provided us with a clear route forward and challenged us with a range of potential improvements as we strive to become a model of best practice within the sector"



Partner with UKBI on delivering National and International Projects

In these times of funding uncertainty, more and more of our members are looking to capitalise on the experience they have in planning, designing and running Business Incubators by providing consultancy services. Consultancy can be a valuable way of contributing to the overall financial sustainability of your Business Incubator, but how do you offer these services when you have no or little track record as a consultant.

UKBI has been providing consultancy and projects to a wide range of clients, both in the UK and Overseas for more than 10 years. We have a proven track record and we are looking to work with our members in partnership for new work.

If this is something you would be interested in we would like to hear from you.

- National and Local Strategy
- Policy
- Feasibility Studies
- Demand Studies
- Business Plans
- Training and Development
- Benchmarking

For more Information please contact UKBI's
Chief Executive, Peter Harman
p.harman@ukbi.co.uk

UK Business Incubation Ltd
Faraday Wharf, Holt Street, Birmingham Science Park Aston, Birmingham B7 4BB
Tel +44 (0)121 250 3538, Fax +44 (0)844 507 0470, Email info@ukbi.co.uk



UMIC: University of Manchester Incubator Company Ltd www.umic.co.uk

- The UMIC Business model; "Developing world-class futures"TM
- Benchmarked globally and accredited by UKBI as "leading edge"
- Vast array of helpful networks, events and conferencing capability
- Created over 1000 jobs, >£100m investment into tenants and graduates
- Experienced team, portfolio of 75 SMEs

UMIC is open to considering UK and international partners for joint development projects

Contact; Dr Martino Picardo,
Managing Director; UMIC Ltd
martino.picardo@umic.co.uk





Booking Form

Contact Details

Title

First Name

Surname

Job Title

Organisation

Address

.....

Postcode

Country

Telephone

Fax

Email

Please tick if you are happy for your email address to appear on the delegate list

Dietary Requirements

Vegetarian Vegan No Dairy

Gluten Free Nut Allergies

Other (please specify)

.....

.....

The prices listed are early bird prices. If payment is not received within the early bird pricing period standard prices will be charged. Early bird prices will end on 14th January 2011.

Wednesday 23rd March 2011

UKBI Workshop

Why you need a Governing Body - the Role and Added Value of Boards and Advisory Groups.

Incubator Tours

Winning Business Academy*

* UKBI members only

Inspire Workshop

Understanding the Inspire Process

International Gala Awards Dinner

Thursday 24th March 2011

Main Conference Sessions

Costs to attend

UKBI Workshop

Members **£100** Non-Members **£145**

Incubator Tours

Members **£75** Non-Members **£100**

Winning Business Academy

Members Only **£25**

Inspire Workshop*

Members **FREE** Non-Members **FREE**

International Gala Dinner

Members **£50** Non-Members **£70**

Main Conference Sessions

Members **£195** Non-Members **£280**

How would you like to pay?

By invoice:

Name, address and phone number where the invoice should be sent.

Name

Address

.....

.....

Tel

By BACS

Account Name: UK Business Incubation Ltd
Account Number: 92154250
Sort Code: 40-11-18

By Credit Card (contact me for details)

Any cancellation received in writing 10 days before an event will receive a full reimbursement of fees paid minus and administration charge of £50 + VAT. Any cancellation after this point will incur a full cancellation fee.

CUT HERE

www.ukbi.co.uk



PLEASE
AFFIX
STAMP

UK Business Incubation
Faraday Wharf
Holt Street
Birmingham Science Park Aston
Birmingham
B7 4BB
UK

ROTHERHAM BOROUGH COUNCIL – REPORT TO MEMBERS
--

1.	Meeting:	Cabinet Member for Regeneration and Environment
2.	Date:	24 January 2011
3.	Title:	Request for provision of a School Crossing Patrol serving Kiveton Park Infant School
4.	Directorate:	Environment & Development Services

5. Summary

Consideration of a school crossing patrol site serving Kiveton Park Infant School is requested in accordance with the national recommended criteria.

The responsibility for ensuring the safety of children to and from school remains a parental one even where a school crossing patrol is provided.

6. Recommendations

- 1. Members are asked to note the provision of a school crossing patrol serving Kiveton Park Infant School in accordance with the national recommended criteria.**
- 2. Members are asked to note the source of funding for the post.**

7. Proposals and Details

A request was received in February 2010 from the Headteacher of Kiveton Park Infant School to provide and fund a School Crossing Patrol on Station Road, Kiveton Park, Sheffield.

The site was assessed in November 2010, against the national recommended criteria for the establishment of crossing patrol sites. The results indicate it meets the criteria for the provision of a school crossing patrol site.

It should also be noted that a zebra crossing is sited on Station Road where it is proposed the school crossing patrol would operate from.

The School Crossing Patrol Guidelines recommend SCP's who work on zebra crossings should follow their normal working procedure, using the sign to stop drivers.

The school session times are between 8.50am and 2.45pm.
A service would need to be provided between 8.40am – 9.15am and 2.35pm – 3.05pm a total of 5.42 hours per week, term time only.

It is proposed Facilities Services employ a School Crossing patrol in line with other school crossing patrol sites across the Borough. Relief cover is not guaranteed, in the event of a vacancy, sickness or agreed leave of absence.

8. Finance

Funding for the post will be met via redistribution of funds from within the Facilities Services revenue budget, due to the introduction of a pelican crossing on an existing school crossing patrol point.

9. Risks and Uncertainties

The non provision of a school crossing patrol site at Kiveton Park Infant School could have a negative effect on the image of Rotherham.

10. Policy and Performance Agenda Implications

Regeneration - Establishing a school crossing patrol site will address the road safety issues, not providing a school crossing patrol could have a negative effect on the image of Rotherham.

11. Background Papers and Consultation

The Headteacher of Kiveton Park Infant School has been consulted in the preparation of this report.

Contact Name : Jane Muffett, Customer Services Manager, extension 54024,
jane.muffett@rotherham.gov.uk

ROTHERHAM BOROUGH COUNCIL – REPORT TO MEMBERS
--

1.	Meeting:	Cabinet Member for Regeneration and Environment
2.	Date:	24 January 2011
3.	Title:	Rotherham Local Site System
4.	Programme Area:	Environment and Development Services

5. Summary

This report seeks approval of an update of the list of Local Wildlife Sites and Regionally Important Geological Sites in Rotherham. This information will form part of the environmental evidence base for the Local Development Framework and be used in the determination of relevant planning applications.

6. Recommendations

- That the Rotherham Local Wildlife Sites 2010 boundaries (as shown in Appendix 1 of this report) be accepted.
- That approval is given to proceed with the integration of the Local Wildlife Sites 2010 boundaries into the preparation of the Local Development Framework and in the determination of relevant planning applications.
- That the Regionally Important Geological Sites 2010 boundaries (as shown in Appendix 3 of this report) be accepted.
- That approval is given to proceed with the integration of the Regionally Important Geological Sites 2010 boundaries into the preparation of the Local Development Framework and in the determination of relevant planning applications.

7 Proposal and Details

The LDF Steering Group meeting on 18 June 2010 agreed to the aspiration of setting up a Local Sites System that encompassed a Local Geological Sites System and a Local Wildlife Sites System. This Report seeks approval of individual sites that would contribute towards that System.

A copy of the Local Wildlife Site maps and the Regionally Important Geological Site maps from Appendices 1 and 3 will be placed in the members reading room on 17 January 2011.

Local Wildlife Sites

RMBC Cabinet approved the adoption of the initial 96 Local Wildlife Sites and resolved that the integration of the Local Wildlife System into the planning framework and into relevant performance monitoring systems be approved and implemented (17 December 2008 minute 139). The Local Wildlife Site System, as approved, includes a responsibility for any additions and amendments to the site list to be reported to the LDF Steering Group and to the Cabinet Member for Economic Regeneration and Development. A paper on proposed amendments to the Local Wildlife Sites and Regionally Important Geological Sites series was reported to LDF Steering Group on 16 July 2010.

Site additions and amendments are generated by proposals arising from landowners and members of the groups represented on the LWS Panel; assessment work is then undertaken to provide support or otherwise for the proposals. The results of the assessments are considered by the LWS Panel and are then reported as above.

During 2010 six additional candidate sites were proposed and assessed; three of these qualify as Local Wildlife Sites. Ongoing site monitoring has enabled a number of existing sites to be reviewed, resulting in additional qualifying criteria to be recorded for these sites.

Prior to making contact with Local Wildlife Site landowners a review of all site qualification has been undertaken. This has led to a number of minor changes to the series of existing sites. A small number of site boundaries have been revised to more accurately reflect the qualifying criteria and a suite of sites with contiguous boundaries have been amalgamated into one site. Three sites have been removed from the list as, on review of the site information, it was found that the qualification had been inaccurately assigned. The names of some of the Local Wildlife Sites have been modified to make them more user-friendly.

A summary of the amendments and an update of the Local Wildlife Site series are attached as Appendix 1.

Regionally Important Geological Sites

Regionally Important Geological Sites (RIGS) in Rotherham were designated following a survey carried out by the South Yorkshire RIGS Group, which is now part of the Sheffield Area Geology Trust (SAGT). These sites of regional geological

importance, often with good access, were endorsed in a meeting of Rotherham Metropolitan Council Cabinet Member and Deputy Economic and Development Issues on the 8 November 1999.

RMBC Forward Planning have commissioned geological survey work to provide updated information on areas of significant geological interest in the Borough, to inform the environmental evidence base of the Local Development Framework. This survey identified three new additional sites of RIGS quality and also proposed boundary changes for many of the existing RIGS. The updated series of RIGS were approved by the Rotherham Local Geological Sites (LGS) Panel. The panel members, whom have local geological expertise, played a crucial role in approving the proposed RIGS and approving the new RIGS boundary proposals. The Rotherham LGS Panel have in outline endorsed the selection criteria for Rotherham RIGS (see Appendix 2, Table 1) and the Rotherham boundary methodology (see Appendix 2 Table 2). The outline methodology followed for RIGS assessment work is given in Appendix 2. Appendix 3 gives an update of the RIGS series.

8. Finance

The cost of the Local Wildlife Site update and geological survey work will be met by the EDS Forward Planning Local Development Framework budget.

9. Risks and Uncertainties

The operation of a Local Site System enables RMBC to demonstrate compliance with current legislation and planning policy including the need to have a robust evidence base.

Designation is based primarily on scientific reasoning and, in accordance with national best practise (Defra, Local Sites: Guidance on their Identification, Selection & Management, 2006), the system includes all sites that qualify. This can create a conflict of interest between Local Site status and potential for development; as Local Site status will be a designation within the Local Development Framework the presence of a Local Site within a proposed development site will be treated as a material consideration.

A Land Registry Search has identified RMBC as a major land owner of Local Wildlife Sites in the Borough. Although the majority of these sites are currently allocated as either Urban Green Space or Green Belt there are a small number that are allocated as either residential, industrial and business or community facilities. The LDF allocations consultation will provide opportunity for representations from land owners and land managers, including RMBC, regarding the designation of the land in the LDF proposals map. It is important that the Council takes a balanced approach, informed by robust evidence base and relevant strategies and plans.

There is a need for a fully documented framework for the selection of sites of geological significance in the borough to increase transparency of operation and reduce uncertainty. The proposed Regionally Important Geological Sites Selection criteria and suite of sites were produced towards this need. The geological survey work carried out in 2010 has identified that in addition to the proposed Regionally

Important Geological Sites series, a significant number of further areas would be worthy of further investigation. The potential for additional survey work, analysis and the establishment of agreed Local Geological Site criteria (which is as yet un-programmed) will be investigated further.

10. Policy and Performance Agenda Implications

Planning Policy Statement 12 (ODPM, 2008) states that areas of protection, such as nationally protected landscape and internationally, nationally and locally designated areas and sites, should be included on adopted proposals maps.

Planning Policy Statement 9 (ODPM 2005) states that 'sites of regional and local biodiversity and geological interest, which include Regionally Important Geological Sites, Local Nature Reserves and Local Sites, have a fundamental role to play in meeting overall national biodiversity targets; contributing to the quality of life and the wellbeing of the community; and in supporting research and education. Criteria-based policies should be established in local development documents against which proposals for any development on, or affecting, such sites will be judged.'

Planning for Biodiversity and Geological conservation – A guide to Good Practice (ODPM 2005) states that local development frameworks should indicate the location of designated sites of importance for biodiversity and geodiversity, making clear distinctions between the hierarchy of international, national, regional and locally designated sites'.

The maintenance of a Local Site system and positive site management are essential elements of Local Area Agreement Indicator NI197 – 'Improved local biodiversity – active management of local sites'.

11. Background Papers and Consultation

- Baker Shepherd Gillespie - Ecological Consultants (April 2007)
Rotherham Local Wildlife Site System:
 - Part 1: The Framework for Rotherham's Local Wildlife Site System,
 - Part 2: Site Selection Guidelines for Rotherham.
- Defra Local Sites – Guidance on their Identification, Selection and Management (February 2006)
- Former Cabinet Member for Economic and Regeneration and Development Services (5.4.2006) RMBC <http://moderngov.rotherham.gov.uk>
- Former Cabinet Member for Economic and Regeneration and Development Services (24.11.2008) RMBC <http://moderngov.rotherham.gov.uk>
- ODPM Planning Policy Statement 9 – Biodiversity and Geological Conservation (2005)
- ODPM Planning for Biodiversity and Geological Conservation – A guide to Good Practice (ODPM 2005)
- ODPM Planning Policy Statement 12 – Local Development Frameworks (2008)
- RMBC Cabinet (17.12.08) <http://moderngov.rotherham.gov.uk>
- RMBC (1999) Policy ENV2.2, Rotherham Unitary Development Plan
- The Natural Environment and Rural Communities (NERC) Act 2006
CLG National Indicators for Local Authorities and Local Authority Partnerships

Contact Names: Rachel Overfield Countryside Planning Assistant 254746 and Carolyn Barber, Ecology Development Officer 822462.

Appendix 1 - An update of the Local Wildlife Site series

Rotherham Local Wildlife Site System – Site List & Boundary adoption 2010

The following maps illustrate the proposed changes to the mapped boundaries of Local Wildlife Sites in Rotherham. The first map shows the 2008 boundaries (as adopted 17/12/2008), the second map shows the proposed changes and additions to the adopted map and the final map shows the proposed 2010 boundaries for acceptance based on the proposed changes.

The following is a list of Local Wildlife Site names; site reference numbers are shown on each of the maps.

LWS2	Loscar Common	LWS63	Listerdale Woods
LWS3	Lobwells Wood	LWS64	Gibbing Greave and Herringthorpe Wood
LWS4	Chesterfield Canal	LWS66	Aldwarke Sewage Farm
LWS5	Nor Wood and Locks	LWS67	Bassingthorpe Spring & Hudson's Rough
LWS6	Rother Valley Country Park	LWS68	Grange Park
LWS7	Nickerwood Ponds	LWS69	Keppel's Field Local Nature Reserve
LWS8	Todwick Common	LWS70	Lady Clough and Smithy Wood
LWS9	Axle Lane	LWS71	Hesley Wood
LWS10	Anston Stones Wood	LWS72	Barley Hole Springs
LWS11	Lindrick Common	LWS75	New Stubbin Colliery and Stubbin Incline
LWS12	Dewidales Wood	LWS76	Warren Vale Local Nature Reserve
LWS13	Cross Lane Meadow	LWS77	Collier Brook and Marsh
LWS15	Swinston Hill Woods	LWS79	Thrybergh Tip
LWS16	Dinnington Colliery Tip	LSW80	Thrybergh Country Park
LWS18	Dinnington Public Open Space	LWS81	Ravenfield Park & Firsby Reservoirs
LWS21	Ivy Lodge Plantation and Rough Wood	LWS82	Hooton Cliff
LWS22	Firbeck Hall Woodlands	LWS83	Back Lane
LWS24	Long and Little Thwaite Woods	LWS84	Kilnhurst Ings
LWS25	Little Moor	LWS85	Kilnhurst Agricultural Letting
LWS26	Dinnington Marsh	LWS86	Creighton & Piccadilly Woods
LWS27	Brampton Common	LWS87	Wath Wood & Boyd Royd Wood
LWS29	Ulley Country Park	LWS88	Flatts Valley
LWS30	Burnt Wood	LWS89	Hooper Plantation
LWS31	Treeton Wood	LWS90	Rainborough Park
LWS32	Treeton Dyke	LWS91	Simon Wood
LWS33	Woodhouse Washlands	LWS92	Lee Wood
LWS34	Catcliffe Flash	LWS93	King's Wood
LWS35	Old Flatts Farm Marsh	LWS95	Skier's Spring Wood
LWS36	Whiston Meadows	LWS96	Rockingham Wood
LWS37	Canklow Wood	LWS97	Thurcroft Mineral Trail
LWS39	Wickersley Gorse	LWS98	Revel Wood
LWS42	Wickersley Wood	LWS99	Austen Park
LWS43	King's Pond Plantation	LWS101	Hazel Road Wood
LWS44	Thurcroft Hall	LWS103	Monk Wood
LWS46	Carr Quarry	LWS104	Anston Brook Walk
LWS47	Hooton Levitt (SW) woodlands	LWS105	St Martin's Church, Firbeck
LWS48	Hooton Levitt (N) woodland	LWS108	Sheffield & South Yorkshire Navigation
LWS49	Wood Lee Common	LWS113	Kilnhurst Riverside
LWS50	Roche Abbey	LWS116	Clough Streamside
LWS53	Sandbeck Park	LWS117	Thorpe Mine
LWS55	Maltby Commons and Woodlands	LWS119	St Peter's Church, Letwell
LWS57	Greenland Plantation	LWS121	Bradgate Brickpits
LWS58	Lilly Hall	LWS204	Tropical Butterfly House, North Anston
LWS59	Hellaby Bridge Brickworks	LWS205	St Margaret's Church, Swinton
LWS61	Gulling Wood & Silver Wood		
LWS62	Silverwood Tip and Odd Hill		



Local Wildlife Sites - 2008 Boundaries

Reproduced from the Ordnance Survey mapping with the permission of the Controller of Her Majesty's Stationery Office © Crown copyright.
Unauthorised reproduction infringes Crown copyright and may lead to prosecution or civil proceedings. Rotherham MBC Licence No. 100019587.
A-Z Maps Copyright Geographers' A-Z Map Co. Ltd
Historical Mapping Copyright The Landmark Information Group.



Proposed site amendment details:

Candidate sites proposed and considered:

- Kilnhurst Flash – Does not qualify as insufficient data held
- Bradgate Brickpits – Qualifies as LWS – added to LWS series as site LWS121
- St Margaret’s Church, Swinton – Qualifies as LWS – added to LWS series as site LWS205
- Tropical Butterfly House, North Anston – Qualifies as LWS – added to LWS series as LWS204
- Pithouse West – Requires further assessment to confirm extent of qualifying area
- Kiveton Community Forest – Does not qualify as insufficient data held

Proposed sites that have not qualified will be retained as candidate LWS and will be reassessed following future survey data submission.

Proposed boundary amendments considered:

- LWS13 – Cross Lane Meadow – boundary revised to accurately reflect the qualifying data.
- LWS27 – Brampton Common – boundary revised to accurately reflect the qualifying data.
- LWS30 – Burnt Wood – boundary revised to accurately reflect the qualifying data.
- LWS32 – Treeton Dyke – boundary revised to accurately reflect the qualifying data.
- LWS35 – Old Flatts Farm Marsh – boundary revised to accurately reflect the qualifying data.
- LWS49 – Wood Lee Common – boundary revised to accurately reflect the qualifying data.
- LWS62 – Silverwood Tip and Odd Hill – boundary revised to accurately reflect the qualifying data.
- LWS102 Bullatree Farm – boundary revised to accurately reflect the qualifying data.
- LWS37 – Canklow Wood – boundary revised to exclude the residential area along Rother View Road that had been incorrectly included.
- LWS103 – Monk Wood – boundary revised to exclude carpark as a non-qualifying compartment.
- LWS50 – Roche Abbey – boundary amended to incorporate previous LWS52 Slade Hills and LWS102 Bullatree farm.
- LWS20 – Langold Farm Wood – site removed as previous qualification was inaccurately assigned.
- LWS73 – Wentworth Park Lakes – site removed as previous qualification was inaccurately assigned.
- LWS74 – Wentworth Park – site removed as previous qualification was inaccurately assigned.
- LWS59 – Hellaby Bridge Brickworks – boundary amended to reflect the current area of potential amphibian interest within the site; this is a temporary boundary pending completion of the translocation scheme agreed by Natural England, at which point a final boundary will be generated.

The above candidate site and boundary amendment proposals have been considered and approved by the Rotherham LWS Panel in accordance with the LWS System Framework and the panel’s Term of Reference.



Local Wildlife Sites - 2010 Boundary Amendments

Reproduced from the Ordnance Survey mapping with the permission of the Controller of Her Majesty's Stationery Office © Crown copyright.
Unauthorised reproduction infringes Crown copyright and may lead to prosecution or civil proceedings. Rotherham MBC Licence No. 100019587
A-Z Maps Copyright Geographers' A-Z Map Co. Ltd
Historical Mapping Copyright The Landmark Information Group





Local Wildlife Sites - 2010 Boundaries

Reproduced from the Ordnance Survey mapping with the permission of the Controller of Her Majesty's Stationary Office © Crown copyright
Unauthorised reproduction infringes Crown copyright and may lead to prosecution or civil proceedings. Rotherham MBC Licence No. 1000
A-Z Maps Copyright Geographers' A-Z Map Co. Ltd
Historical Mapping Copyright The Landmark Information Group.



Appendix 2 – Information on the Rotherham RIGS selection and boundary update work 2010

Background

RMBC Forward Planning commissioned geological survey work to provide updated information on areas of significant geological interest in the Borough to inform the environmental evidence base of the Local Development Framework. It is anticipated that RIGS will be a designation within the Local Development Framework and shown on the Local Development Framework Proposals Map. The presence of a RIGS within a proposed development site will be capable of being a material consideration.

The Local Development Framework Steering Group meeting on 18 June 2010 agreed the aspiration for a Local Sites System encompassing a Local Geological Sites (LGS) System. It is currently anticipated that RIGS will form part of this future Local Geological Site System. Details on the formation of a Rotherham Local Sites System encompassing a Local Geological Sites System will be reported in a future paper to Members. It is envisaged that any LGS System would mirror the existing Local Wildlife Sites System currently in operation. In the interim, it is hoped that this appendix will give a degree of transparency on current RIGS operation.

The existing series of RIGS were designated in the 1990s and implemented in planning through Rotherham Unitary Development Plan Policy ENV2.2. In 1996 and 1997 potential RIGS sites were identified from geological memoirs, other literature, existing information and local knowledge. Each site was visited and a record sheet completed to give a description of the geological interest and a range of other site information. The process of agreeing change to this existing series of Rotherham RIGS to inform the Local Development Framework is proceeding in a series of stages as follows:

1. Establishment of Rotherham Local Geological Site Panel – a panel of local experts with experience in geoconservation that meet at least twice a year to oversee the selection, evaluation and deselection of Local Geological Sites.
2. Commissioning of geological survey work in Rotherham by RMBC in 2010. Survey work has provided information on new sites of RIGS quality, has revisited existing RIGS to check the designating interest is still present and has checked that their boundaries are correct (in order to inform the LDF Draft Proposals map). The survey has also identified other areas of geological significance worthy of further exploration.
3. For the 2010 geological survey a range of existing information was analysed to check the designating RIGS interest was still present and that RIGS boundaries were correct. Areas of additional geological significance were also identified. Existing geological information was obtained from a range of sources including aerial photographs and documents in the public domain.
4. Relevant landowners were contacted regarding permission to access the land. Where this was not obtained information was collected for survey access from public highways or footpaths or remote viewing. New sites of RIGS quality were

identified in line with the RIGS selection criteria given below. Notes on RIGS boundary identification methodology is given below in Table 2 at the end of this appendix.

5. The Rotherham Local Geological Site Panel has approved the proposed new RIGS and the proposals for updating the existing RIGS boundaries. The Panel in outline endorsed the selection criteria for Rotherham RIGS given in Table 1.
6. Report to RMBC Members seeking acceptance of the new RIGS sites and updated boundaries as well as incorporation of the RIGS into the planning framework.
7. Feedback is anticipated to be given to RIGS landowners who granted access permission.
8. Future RIGS Monitoring via a rolling program is recommended

Table 1 Rotherham RIGS selection criteria – sites may qualify if they meet one or more of the following:

- Is the geological feature at the site the only one in South Yorkshire?
- Is the site the best example of this particular geological or geomorphological feature?
- Is the site above a threshold of local geological or geomorphological importance, or part of a series of linked sites?
- Does the site have high educational value for use by schools, higher education students and researchers?
- Does the site have good public access or could provision for access be made with the permission of the landowner?
- Is the site linked to important advances in geological knowledge or has it other historical value?
- Is the site highly valued by the community because of its amenity and / or beauty?

The validation and approval of the RMBC commissioned geological survey work and its subsequent recommendations was undertaken by the Rotherham Local Geological Site Panel. (It is noted that Panel recommendations for any future addition or deletion to the series of sites would need to be reported to members by a report to LDF Steering Group and RMBC Cabinet Member for Regeneration and Environment for its subsequent implementation into the planning framework).

Further work

1) It is envisaged that further information for landowners on RIGS selection and de-selection process will probably be required. This information would be drawn up in conjunction with the Rotherham Local Geological Site Panel and may include information along the following lines.

- Requests for changes to approved RIGS would need to be made to the Local Geological Sites Panel.
- Landowners may need to understand that a review of the designation and resulting evidence gathering could lead to additional areas being designated

and/or the area being assessed on other Local Sites criteria (A proportion of RIGS are Local Wildlife Sites).

- The landowner would be able to make a request of a review of a RIGS boundary to the Rotherham Local Geological Site Panel. Up to date valid site information may need to be provided if not available.
- Each site will need to be considered on a site by site basis by the Panel.
- There may be some scope to revise boundaries as they also reflect practical management boundaries, and not always the boundary of the geological, geodiversity and other nature conservation interests.
- In some cases the Panel may advise they have no objection to development proceeding on part of a RIGS site area, particularly former large quarry areas, providing that overall the development enhances the geodiversity while conserving or enhancing any ecological interest.

2) Details on the steps towards formation of a Rotherham Local Sites System encompassing a Local Geological System will be reported in a future paper to Members.

3) A rolling program of RIGS monitoring is recommended subject to funding.

Table 2 Notes on Rotherham RIGS boundary methodology

- Once a geological site has been assessed as being of RIGS quality, consideration is given to the identification of the boundaries of the designated area.
- Each site area is identified by having a separate designation statement of the main interest within the area.
- The determination of boundaries should be undertaken so as to ensure that the area of land that meets the selection guidelines is included within the site boundary.
- Boundaries have been drawn so that they can be readily located on maps and on the ground, which includes field boundaries and paths.
- Boundaries have been drawn so that they do not include significant areas of land that are outside the area of geodiversity interest and thus place an undue constraint on potential development. They may (and where possible should), however, include areas of nature conservation interest that is of lesser value where it is an integral part of the management unit or provides additional or associated ecological, geological or geomorphological interest.
- For geomorphological and landscape feature sites, it is anticipated that the areas of lesser value will occupy less than 50% of the area of the land parcel under consideration though this percentage restriction may not be applicable to quarry sites
- Site boundaries may be drawn using field evidence, current and historical map evidence, current and historical aerial imagery, publications and data within Rotherham Geological Records held by Sheffield Area Geology Trust.

(a) The site boundaries have been determined by readily identifiable practical management areas that include areas which include all the area with the designated

and associated geodiversity interest, including quarry faces, shale scrapes, spoil tips and natural stone boundary walls.

(b) Where there is an aggregation of separate management subunits based on land use or ownership, that are adjacent to each other the boundary has been drawn to include all management subunit compartments as a single RIGS area. Where RIGS and earth heritage SSSIs are designated on different criteria, they may have adjacent or different overlapping boundaries. Adjacent RIGS sites may be aggregated into a larger RIGS area for planning purposes.

(c) Where there is a grouping of separate management units of the same type (for example a series of disused quarries) that are in close proximity to each other they may also be referred to by a single RIGS name.

(d) For large areas with only a minority of the area is of geological and/or geomorphological interest, the boundary may be drawn to the nearest mapped feature or a line between two features, or an area enclosing the feature, so that the majority of the area of land identified encloses the RIGS features and associated biodiversity and/or geodiversity interest without including large areas without geodiversity interest.

(e) For RIGS where access from a public right of way is required in order to maintain the access interest of the RIGS, the boundary may be drawn to include the access to the site where the boundary can be readily identified by observable physical boundaries or mapped features. Buffer zones are important for some geological sites, including springs and fluvial and landscape geomorphology areas in order to protect the supply and quality of water and consequently, these buffer zones may warrant inclusion within a RIGS designation for this particular function.

(f) For cave sites the area will include the cave entrance and associated rock outcrop. It is recognised that that the land above areas with caves and fissures may retain buried interest karst features and preserved soil profiles, particularly if the land has not been previously disturbed. The land above cave sites presents boundary identification difficulties, as the full extent of caves is often unknown. The land above the known or probable extent of caves will be included within the site boundary. The land above cave and fissure areas of unknown extent that is currently identified as woodland and unimproved grassland will be included within the RIGS area. The land identified above caves of possible extent that includes areas with development including housing, recreational grassland and arable field will not be included within the defined boundary, but may be notified to planning as an area with potential planning constraints, including cuttings, excavations and the construction of below ground level structures that might expose or damage the cave system.

(g) For mixed bedrock, superficial sediment and geomorphology areas, and former quarries, there may be a requirement for different subunit areas to be identified for different interests. RIGS boundaries may be drawn to include all interests or features that can be shown to be important to the maintenance of the interests within the designated site.

(h) For rivers, it is difficult to define static boundaries on what are dynamic systems. Rivers may change course by erosion, thus quickly rendering the RIGS boundaries out of date. In these circumstances the boundary of the site designation upstream and downstream at fixed points should be provided and the riverbank boundaries should be regularly checked and/or determined on the ground as and when required. On other less dynamic rivers the top of the banks bordering the floodplain area can be used to determine the RIGS boundary). It may be appropriate to divide fluvial geomorphology sites into units of 0.5 - 2km in length, using bridges and other mapped features as dividing points.

(l) For quarry or disused quarry sites, the floor of the quarry will ordinarily be included within the site area, as the buried interest is likely to remain close to the land surface. Providing that there are no other ecological or archaeological interests, it may be possible to allow development within the quarry floor providing that access to the quarry faces is maintained, and that the development does not require measures to stabilise the quarry faces that will damage the geodiversity interest. Any permitted buildings within the floor of a quarry will be normally excluded from the site boundary. The land above quarry faces may need to be included within the site boundary in order to ensure the stability of the quarry faces. The width of this required headland is much greater for soft mudstones than for hard limestones and sandstones. As many former quarries were excavated close to the ownership boundaries, the boundary of conservation interest may extend beyond the defined site management boundary as a buffer zone with restrictions on development.

(j) For landscape geomorphology sites, the main geodiversity interest is contained in the natural rock outcrops, and the natural landform features, though these areas may also include disused quarries.

(k) The selection guidelines will not be applied to domestic or industrial (including agricultural) buildings, other than those built of local rocks. Other artificial structures, for example stone walls, mine shafts, tunnels, bridges, historic monuments, may, however, be considered for designation. Unlike Local Wildlife Sites, RIGS may include natural rock outcrops and former quarry features within domestic gardens.

Field work carried out in 2010 by Sheffield Area Geology Trust has recommended the amendment of a number of existing RIGS boundaries, following the application of the guidance above. In many cases, the original RIGS site boundaries were drawn around the main rock outcrops or the main landscape features. Current national practice is to draw the boundary around all the geological interest, including the quarry spoil heaps. Some changes in boundaries were required because of the greater accuracy of the OS master map series compared to the old 6 inch maps used for the original survey work. For active quarry sites, the boundary changes are needed to reflect the current position of the quarry faces, not the position when the map of the area was prepared. Aerial images are particularly useful for undertaking this work.

Appendix 3 An Update of the Rotherham Regionally Important Geological Sites series

Rotherham Regionally Important Geological Sites (RIGS) - Site List & Boundary adoption 2010

The maps enclosed illustrate the proposed changes to the mapped boundaries of RIGS in Rotherham. The first map shows the boundaries as digitised in 2009, the second map shows the proposed changes and additions to the 2009 map and the final map shows the proposed 2010 boundaries for adoption based on the proposed changes.

The following is a list of RIGS names; site reference numbers are shown on each of the maps.

R2 - Hooper Plantation

R4 - Hermit Hill Quarry

R7 - Hooton Roberts Quarries

R9 - Shepherd's Plantation

R11 - Thundercliffe Grange

R12 - Grange Moor Quarry

R21 - Boston Park

R27 - Canklow Woods

R22 - Great Bank

R20 - Silverwood Colliery

R32 - Maltby Brick Works

R37 - Wood Lee Common

R42, 43, 91 - Roche Abbey and Nor Wood Caves

R66 - Red Hill Quarry

R68 - Kiveton Lodge (2)

R51 - R54 Anston Stones Wood

R58, R65, R62 - Lindrick Dale, Monk Bridge and Wood Mill

R77 and R83 - Shireoaks Quarry and Turnerwood Quarry

R79 - Slaypit Lane Quarry

R80 - Fan Field Quarry

R92 - Maltby Wood Cave

R90 - Herne Hill Caves

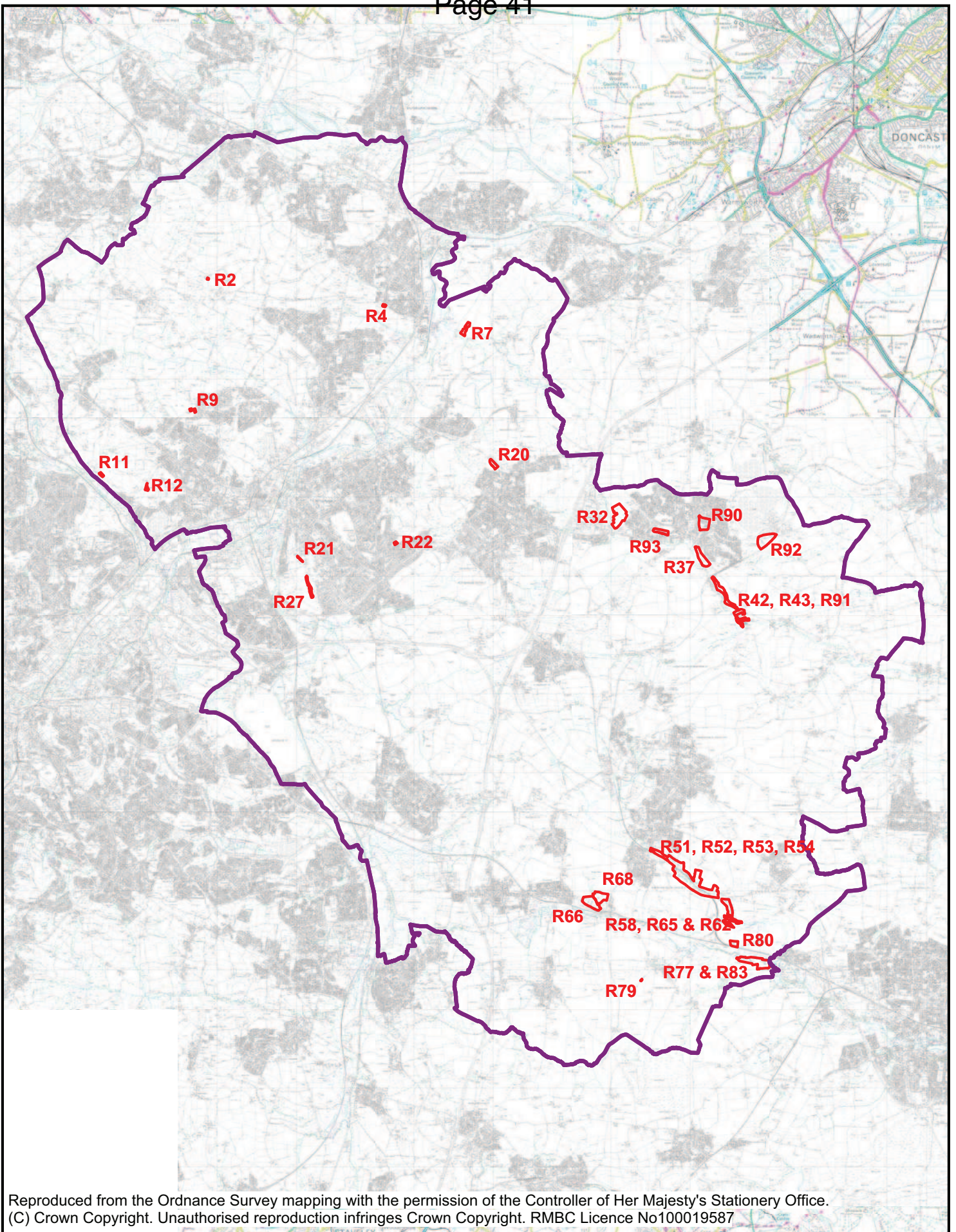
R93 - School Cave

R15 - Bradgate Brick Pits *



R23 - Brecks Quarries *

R26 – Canklow Meadows (NB previously known as Brinsworth Roundabout) *

* New RIGS approved by the Rotherham Local Geological Sites Panel in 2010



Reproduced from the Ordnance Survey mapping with the permission of the Controller of Her Majesty's Stationery Office. (C) Crown Copyright. Unauthorised reproduction infringes Crown Copyright. RMBC Licence No100019587

-  RIGS boundary
-  RMBC Boundary

Scale: NTS Date: 11.01.2011

Rotherham Regionally Important Geological Sites Boundaries (As digitised 2009)

RMBC
Envt & Devt Services
Bailey House
Rawmarsh Road
Rotherham S60 1TD

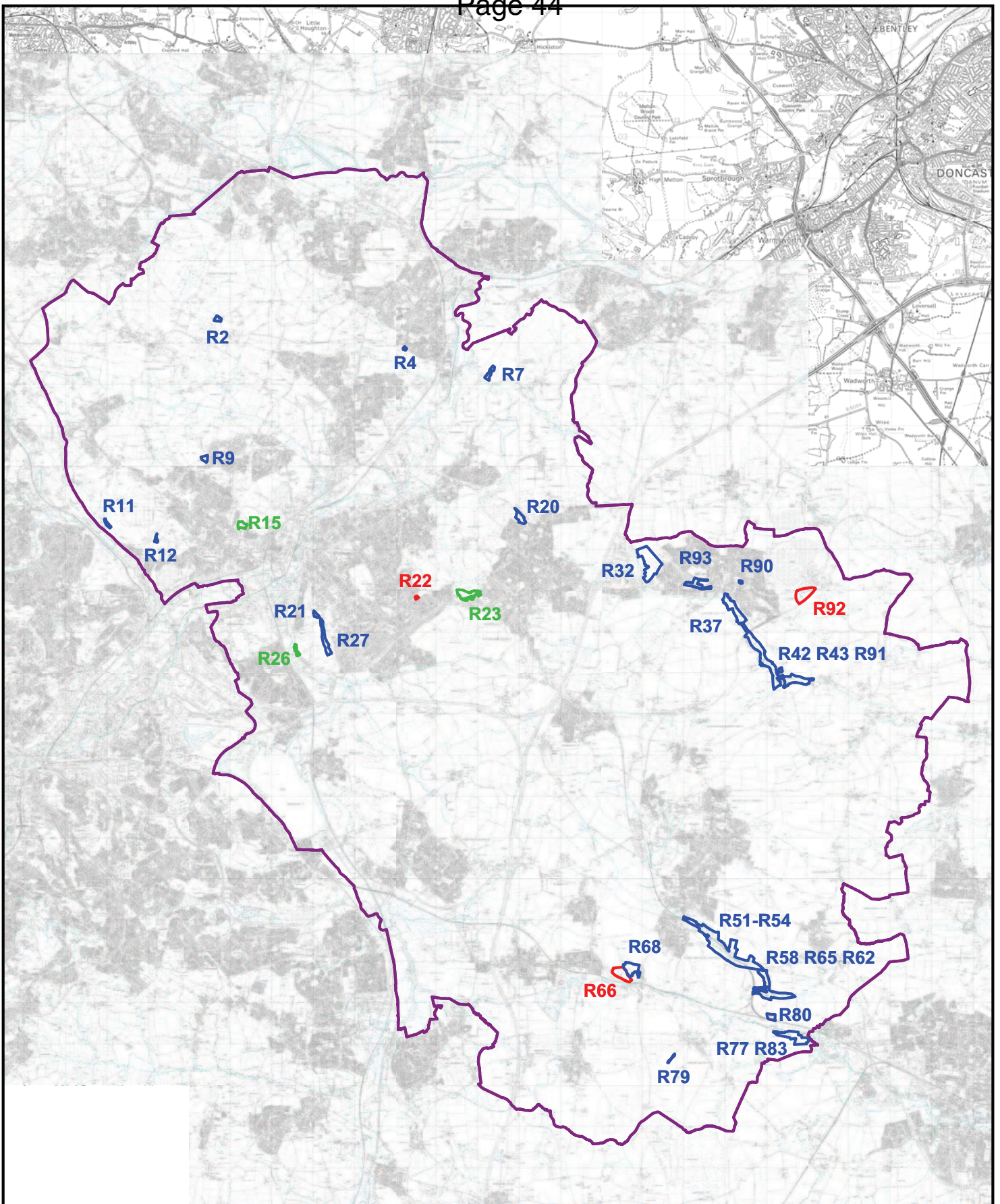


Rotherham RIGS 2010 Proposed Site Amendments

Proposed RIGS site area amendment details, noting reasons for changes to boundary details. Many boundaries are revised to reflect the area of geodiversity, geological and associated conservation interest; no sites were deselected.

- R2 - Hooper Plantation – boundary revised to reflect the conservation interest area.
- R4 - Hermit Hill Quarry – boundary revised to reflect the conservation interest area.
- R7 - Hooton Roberts Quarries – minor change related to map accuracy
- R9 - Shepherd's Plantation – boundary revised to reflect the conservation interest area.
- R11 - Thundercliffe Grange – boundary revised to reflect the conservation interest area.
- R12 - Grange Moor Quarry – boundary revised to reflect the conservation interest area.
- R21 - Boston Park – boundary revised to reflect the conservation interest area.
- R27 - Canklow Woods – boundary revised to reflect the conservation interest area.
- R22 - Great Bank – no change
- R20 - Silverwood Colliery (= Silverwood Quarry) – boundary revised to reflect the conservation interest area.
- R32 - Maltby Brick Works – boundary revised to reflect the conservation interest area.
- R37 - Wood Lee Common – boundary revised to reflect the conservation interest area.
- R42, 43, 91 - Roche Abbey and Nor Wood Caves – boundary revised to reflect the conservation interest area.
- R66 - Red Hill Quarry – no change
- R68 - Kiveton Lodge 2 – boundary revised to reflect the conservation interest area.
- R51 - R54 Anston Stones Wood – boundary revised to reflect the conservation interest area.
- R58, R65, R62 - Lindrick Dale, Monk Bridge and Wood Mill – boundary revised to reflect the conservation interest area.
- R77 and R83 - Shireoaks Quarry and Turnerwood Quarry – boundary revised to reflect the conservation interest area.
- R79 - Slaypit Lane Quarry – boundary revised to reflect the conservation interest area.
- R80 - Fan Field Quarry – minor boundary revision to allow access to area from public footpath.
- R92 - Maltby Wood Cave – no change

- R90 - Herne Hill Caves Maltby – boundary revised to reflect the above ground conservation interest area.
- R93 - School Cave Maltby – boundary revised to reflect the conservation interest area.
- R15 - Bradgate Brick Pits - new site 2010. Note a boundary amendment was agreed by Rotherham Local Geological Sites Panel on 14th December 2010 subject to landowner agreement.
- R23 - Brecks Quarries - site added as new site in 2010 [this site was assessed and was designated in 1996 but was not included within the list of RIGS sites.]
- R26 – Canklow Meadows (NB previously known as Brinsworth Roundabout) - site added as new site in 2010 [this site was assessed and designated in 1996 but was not included within the list of RIGS sites.]



Reproduced from the Ordnance Survey mapping with the permission of the Controller of Her Majesty's Stationery Office. (C) Crown Copyright. Unauthorised reproduction infringes Crown Copyright. RMBC Licence No100019587

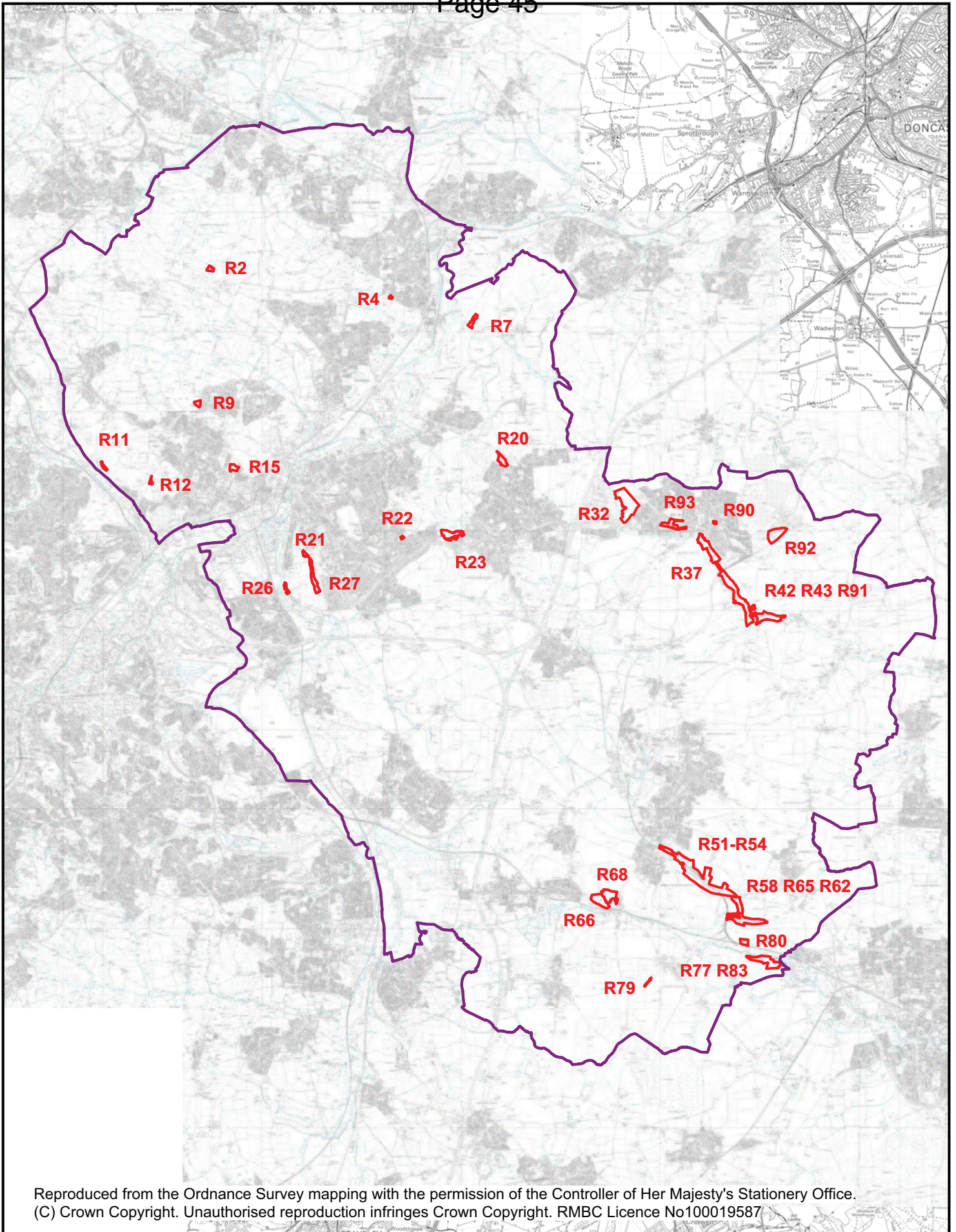
- Unchanged Boundary
- Changed Boundary
- New Site 2010
- RMBC boundary

Scale: NTS Date: 11.01.2011



Rotherham Regionally Important Geological Sites 2010 Amendments

RMBC
 Env't & Dev't Services
 Bailey House
 Rawmarsh Road
 Rotherham S60 1TD





Reproduced from the Ordnance Survey mapping with the permission of the Controller of Her Majesty's Stationery Office.
(C) Crown Copyright. Unauthorised reproduction infringes Crown Copyright. RMBC Licence No100019587

-  RIGS boundary
-  RMBC boundary

Scale: NTS Date: 11.01.2011

Rotherham Regionally Important Geological Sites 2010 Boundaries

RMBC
Envt & Devt Services
Bailey House
Rawmarsh Road
Rotherham S60 1TD



ROTHERHAM BOROUGH COUNCIL – REPORT TO MEMBERS
--

1.	Meeting:	Cabinet Member for Regeneration and Environment
2.	Date:	24 January 2011
3.	Title:	A57 Worksop Road / Sheffield Road Improvement M1 Junction 31 to Todwick Crossroads
4.	Programme Area:	Environment and Development Services

5. Summary

The report outlines the current position relating to the A57 Worksop Road / Sheffield Road Major Scheme, the Department for Transport's (DfT) review of the 'best and final offers', and the subsequent request from the DfT to reduce their contribution towards the scheme. It seeks to gain Cabinet Member's support to use LTP Integrated Transport capital funding and Maintenance allocations and to increase RMBC's local contribution and to confirm with the DfT our continued support for the scheme.

6. Recommendations

- i) **That Cabinet Member approves an increase in the Councils local contribution towards the A57 (M1 to Todwick Crossroads) Major Scheme from £2,000,000 to £2,900,000 using £900,000 of Local Transport Plan Integrated Transport capital funding and Maintenance allocations, thereby reducing the DfT contribution towards the scheme from £12,700,000 to £11,800,000.**
 - ii) **The agreement of the Mayor be sought to exempt this decision from the provisions of the call in procedure on the grounds that it is urgent. The DfT require notification of the Councils decision to increase the local contribution by the 24 January 2011.**
-

7. Proposals and Details

Background

Following the Comprehensive Spending Review, in late October 2010 the A57 scheme was confirmed as being one of only ten schemes nationally, and the only scheme in South Yorkshire, that the DfT had identified within a 'Supported Pool' of major schemes.

In November the DfT wrote to all of the scheme promoters with schemes in the Supported Pool and asked them to submit a 'best and final offer' setting out the level of funding the Council will provide for the scheme, the level of funding available from third party contributions, and the maximum funding that will be required from the DfT to deliver the scheme. The DfT stressed that scheme promoters had to demonstrate that all reasonable efforts had been made to reduce costs and secure additional local and third party contributions, whilst carefully considering the impact in of any changes to the scope of a scheme in terms of cost reduction which would impact on the overall benefits.

On 15 December 2010 Cabinet approved the submission of a 'best and final offer' to the Department for Transport for the implementation of an amended A57 (M1 Junction 31 to Todwick Crossroads) major highway improvement scheme. (Minute Number C134 refers)

Previously the scheme provided for a dual carriageway designed for the National Speed Limit with a subway to the west of the junction with Goosecarr Lane which the DfT had indicated they were prepared to invest £12.77m and the Council had also pledged a contribution of £2m, a total of £14.77m. Following completion of detailed design the scheme cost was estimated at £16.3m. It was proposed that any funding gap, at that time £1.53m, would be sought from the Geographic Programme funded by Yorkshire Forward (YF). However, following the decision by the coalition Government to abolish Regional Development Agencies this funding source was no longer available.

The 'best and final offer' approved by Cabinet and submitted to the DfT allows for a reduction in scope which includes the retention of a dual carriageway scheme designed for a 50mph speed limit including an at grade signalised crossing to replace the subway at a total scheme cost of £14.7m. The offer sought a £12.7m contribution from the DfT and included a £2.0m local contribution from the Council's Capital Programme.

The amended scheme therefore removed the funding gap created by the lack of YF funding and reduced the DfT contribution from around £12.8m to £12.7m.

Current position

The DfT have commenced their review of the 'best and final offers' and they have indicated to the Council that the promoters of the other schemes within the Supported Pool have reduced their requested DfT contribution by significant amounts and that, by virtue, these are being considered more favourably.

The DfT have suggested that the A57 (M1 to Todwick Crossroads) Major Scheme is unlikely to receive continued support from the DfT unless their contribution is

reduced by a further £900,000. It is now clear that whilst the change in scope to the scheme was successful in removing the funding shortfall created by the loss of the Yorkshire Forward funding and in retaining significant benefit, that the DfT now consider that it did not go far enough to reduce their contribution.

Proposal

In order to reduce the DfT contribution by a further £900,000 either the cost of the scheme would have to reduce; the local contribution would have to increase; or a combination of the two. Whilst the report to Cabinet indicated that further cost savings may be achievable at the time the scheme is put out to tender, at present these costs have not been quantified. It is therefore considered that in order to confirm the Council's continued support of the scheme that additional funding is identified.

Should the A57 Major Scheme not go ahead that reconstruction of part of Todwick Road currently included within the scheme, would need to be implemented at a cost of approximately £500,000 from maintenance allocations. This along with other funding from the Local Transport Plan could be used to increase RMBC's local contribution to £2,900,000.

8. Finance

It is recommended that the Council identifies £900,000 of additional funding from LTP Integrated Transport capital funding and future Maintenance allocations as a contribution towards the A57 Major Scheme. It is anticipated that the additional funding would be required in 2013/14.

This increases the Council's Local Contribution to £2,900,000 thereby reducing the DfT contribution to £11,800,000.

9. Risks and Uncertainties

Within the new guidance for Major Schemes the previous risk layer cost sharing mechanism has been removed. This effectively means that the DfT contribution will be a maximum contribution and *all* of the risk associated with an overspend in the delivery of the scheme lies with RMBC. In addition, should the accepted tender price be lower than the scheme estimate we have been advised to assume that the tender price 'saving' would be shared between both the DfT and RMBC in proportion to the contributions.

Given the increased local contribution, in order to mitigate against the additional risk associated with overspend, at the time of confirming the Council's position, officers will request that the DfT consider that their contribution be provided as a fixed contribution and not a maximum contribution.

From 2011/12 all Local Transport Plan (LTP) funding (Maintenance and Integrated Transport) will be paid directly to the South Yorkshire Integrated Transport Authority (SYITA) and final decisions on how funding will be reallocated to districts and the SYPTE are still to be made. In addition the LTP settlements for 2013/14 and 14/15 have been announced as provisional figures and are potentially subject to change. It should also be noted that providing additional LTP funding towards the A57 is likely to have an adverse impact on the level of LTP funding received by the Borough for

other initiatives or schemes, although this is mitigated to a certain extent due to the known requirement to fund future maintenance of this section of the A57.

All other risks and uncertainties identified within the report to Cabinet dated 15 December 2010 remain valid.

10. Policy and Performance Agenda Implications

The scheme is a named major highway improvement scheme in LTP2 and the draft Sheffield City Region Transport Strategy (LTP3) and accords with the aims and objectives to assist the improved management of traffic, provide road safety benefits and support regeneration and economic growth. The improvement supports the aims and objectives of the Traffic Management Act 2004 in reducing congestion and improving the free and safe flow of traffic.

11. Background Papers and Consultation

Financial Services have been consulted on, and approved, the content of this report. South Yorkshire Local Transport Plan 2006-2011.

Sheffield City Region Transport Strategy 2011 – 2026.

Minute No. 131 of Cabinet held on 2 November 2005 approving £2m contribution from the Council's Capital Programme.

Minute No. 176 of Cabinet on 11th February 2009 reaffirming the need to progress the scheme and pursue the necessary CPO/SRO processes.

Minute No. C134 of Cabinet on 15th December 2010 approving the submission of a best and final offer bid to the DfT for the implementation of an amended scheme, with the bid to seek £12.7m funding from DfT and £2.0m from the Council's Capital Programme.

Contact Name:

Tom Finnegan-Smith, Transportation Unit Manager, Planning and Regeneration, extension 22967, tom.finnegan-smith@rotherham.gov.uk